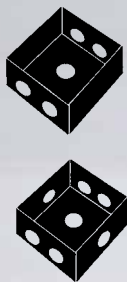


# 2-Gang Deep Boxes

Suitable for wet locations

- For use in branch circuit wiring in wet, damp or dry locations.
- Made from heavy-duty die-cast aluminum; .094 inches thick.
- 4.5 in. high x 4.5 in. wide x 2.625 in. deep.
- Superior powder coat finish assures maximum weatherability.
- Detachable lugs, 2 close-up plugs and self-tapping ground screw included.
- c-UL-us listed for use in the United States and Canada.
- NEMA 3R Rated.
- All of the boxes on this page are made in the U.S.A.

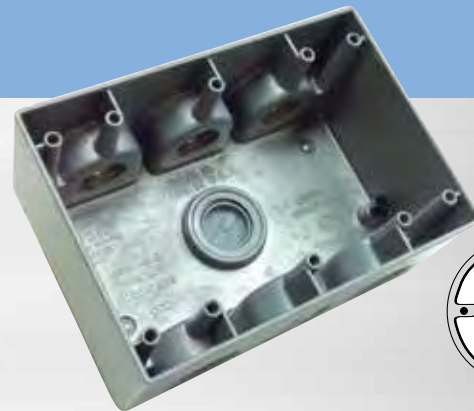


Catalog No.	No. Outlets	Location	Hub Size	Color	Cubic Capacity	Carton Quantity	Weight per 100 units
30593	5	2 in each end, 1 in back	1/2"	Gray	37.3"	10	130 lbs.
30595	5	2 in each end, 1 in back	3/4"	Gray	37.3"	10	130 lbs.
30596	5	2 in each end, 1 in back	1"	Gray	37.3"	10	130 lbs.
30597	7	2 in each end, 1 in each side, 1 in back	1/2"	Gray	37.3"	10	130 lbs.
30598	7	2 in each end, 1 in each side, 1 in back	3/4"	Gray	37.3"	10	130 lbs.
30599	7	2 in each end, 1 in each side, 1 in back	1"	Gray	37.3"	10	130 lbs.

# 3-Gang Deep Boxes

Suitable for wet locations

- For use in branch circuit wiring in wet, damp or dry locations.
- Made from heavy-duty die-cast aluminum; .094 inches thick.
- 4.5 in. high x 6.375 in. wide x 2.625 in. deep.
- Superior powder coat finish assures maximum weatherability.
- Detachable lugs, 2 close-up plugs and self-tapping ground screw included.
- c-UL-us listed for use in the United States and Canada.
- NEMA 3R Rated.
- All of the boxes on this page are made in the U.S.A.



Catalog No.	No. Outlets	Location	Hub Size	Color	Cubic Capacity	Carton Quantity	Weight per 100 units
30601	7	3 in each end, 1 in back	3/4"	Gray	59.8"	10	150 lbs.
30603	7	3 in each end, 1 in back	1"	Gray	59.8"	10	150 lbs.